



# LEVY AND BOND VOTER INFORMATION 2008

After a series of four public meetings held from November through January of this school year an advisory committee of Meridian citizens made a recommendation to the Meridian School Board to propose the following Levy and Bond measures to the voters of the District on the March 11, 2008 ballot.

Details of their recommendations and subsequent action by the school board can be found in this informational brochure.

Additional Information can be obtained at [www.meridian.wednet.edu](http://www.meridian.wednet.edu) or by contacting the district office at 360-398-7111

*Meridian School District 214 W. Laurel Road Bellingham, WA 98226*

## What is the difference between a Levy and a Bond?

Levy money is for learning and learning support. It is used for direct support for the educational program and has made up approximately 15% of Meridian’s operating budget in the past. The levy is a tax that is renewed every four years and needs 50% plus 1 to be approved by the voters. The levy is not a new tax.

Bonds are for buildings. Bonds pay for capital projects that are used to build or remodel schools. These funds cannot be used for the day-to day running of the school district. This new bond measure would replace bonds that will be paid off in the near future. Bonds require a 60% majority for approval by voters.

The proposed levy and proposed bond rate *combined* would be \$3.99 per \$1000 of assessed valuation.

## What would the Capital Bond for Meridian High School provide?

- Replacement of the 1920’s structure that has seismic, structural, electrical, and energy efficiency issues with new classrooms, science labs and office spaces
- Replacement of roofing on several structures on the high school campus
- Replacement of 1940’s and 1950’s era boilers and piping that provide heat to the campus
- Replacement of non-insulated walls in the technical education wing
- Renovation of the existing locker rooms in the old gym area
- Renovation and expansion of the high school library
- Increased campus security upgrades and a master plan for any future expansion

Meridian estimated tax increase if the Levy and Bond are approved by voters  
95 cents per \$1000 of valuation

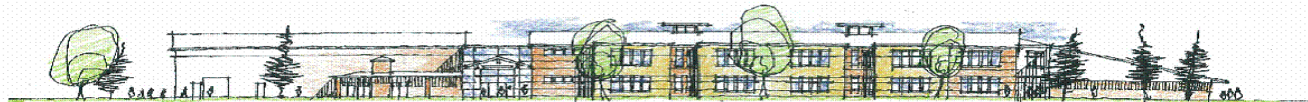
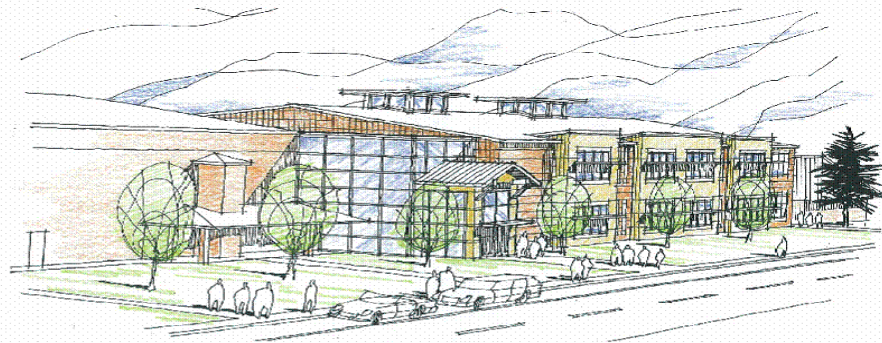
### Net increase after allowing for income tax deductions

Assessed Value of Property	Gross Property Increase from Bonds	Monthly Gross Increase from Bonds	Federal Tax Brackets Listed below			
			25%	28%	33%	35%
<b>\$100,000</b>	\$95.04	\$7.92	\$71.28	\$68.43	\$63.68	\$61.78
<b>200,000</b>	190.08	15.84	142.56	138.86	127.35	123.55
<b>250,000</b>	237.60	19.80	178.20	171.07	159.19	154.44
<b>300,000</b>	285.12	23.76	213.84	205.29	191.03	185.33
<b>350,000</b>	322.64	27.72	249.48	239.50	222.87	216.22

You may be eligible for an exemption. Disabled persons or those 61 years of age and older may be eligible for a tax exemption on school levies and bonds. Call the Whatcom County Assessor’s Office, 676-6790 for information.

# What does the local school levy in the Meridian School District fund?

- Classroom teaching positions to provide elective courses and class size reduction
- Specialist teaching and school support positions including elementary and middle school music teachers, computer teachers at elementary level, the school district nurse, the drug/alcohol prevention specialist, the information systems manager, and school counselors
- School bus transportation for students and transportation equipment replacement
- Textbook replacement, teaching supplies and staff training
- Partial funding for principals, librarians, para-eds, student monitors, clerical staff and custodians
- The technology support budget
- Co-curricular athletic and student activity programs
- Ongoing utility and maintenance costs
- Special education programs and services



Meridian High School  
New Classroom Building - Schematic Rendering  
9 January 2008

SH: 1 OF 6  
SK  
ARCHITECTURE  
DESIGN • KING PAULSON, INC.



Whatcom County is a vote by mail county; ballots were mailed out on February 20<sup>th</sup>, 2008. They must be postmarked by March 11, 2008. Call the Whatcom County Assessor's 676-6790 for more information.

PROPOSITION NO. 1

MERIDIAN SCHOOL DISTRICT  
NO. 505  
REPLACEMENT EDUCATIONAL  
MAINTENANCE AND OPERATIONS LEVY

The Board of Directors adopted Resolution #02-08 concerning educational funding. This proposition authorizes the District to levy the following excess taxes, to replace an expiring levy, on all taxable property within the District, to support the District's educational maintenance and operations:

Should this proposition be:

APPROVED?

REJECTED?

PROPOSITION NO. 2

MERIDIAN SCHOOL DISTRICT  
NO. 505  
GENERAL OBLIGATION BONDS -  
\$23,000,000

The Board of Directors of Meridian School District No. 505 approved a proposition for bonds. This proposition authorizes the District to modernize and make new capital improvements to Meridian High School, to issue \$23,000,000 of general obligation bonds maturing within a maximum term of 23 years; and to levy additional property taxes annually to repay the bonds, as described in Resolution #03-08.

Should this proposition be:

APPROVED?

REJECTED?

Collection Years	Approximate Levy Rate	Levy Amount	Collection Years	Projected Bond Tax Rate	Total Bond Amount
2009	\$2.54	\$2,540,000	2009	\$1.45	\$23,000,000
2010	\$2.57	\$2,640,000	2010	\$1.42	\$23,000,000
2011	\$2.58	\$2,740,000	2011	\$1.41	\$23,000,000
2012	\$2.60	\$2,840,000	2012	\$1.37	\$23,000,000

Election Date: March 11, 2008

Meridian School District No. 505  
214 W. Laurel Rd.  
Bellingham, WA 98226



**Nonprofit Org.**  
**US Postage PAID**  
**Bellingham WA**  
**Permit No. 119**

Board of Directors

Brian Evans, Chair  
Mary Mattison, Vice Chair  
Judy Boxx  
Charlie Crabtree  
Craig Wasilewski

Superintendent

Timothy S. Yeomans

Executive Director of Teaching and Learning

Fredrika Smith

Principals

Lynne Jermunson, IRPS  
Bruce Burpee, TMCE & MP3  
Jerry Sanderson, MMS  
Dave Shockley, MHS