



2023-24

*Annual Calendar and Notices*





**Welcome!**

Students, families, staff and community members,

Welcome to a new school year with Meridian School District! Please take a moment to review the annual notices and calendar enclosed. You will find important information about the district and your school. You will also see art throughout the calendar created by our students. Thank you to all of our talented student artists!



We have provided a back-to-school checklist with reminders about important annual forms and a copy of the free and reduced meals application. You will also find instructions for Skyward, FinalForms and ParentSquare.

If you still have questions or need additional information, please visit our website at [www.meridian.wednet.edu](http://www.meridian.wednet.edu) or call us at 360-398-7111.

Learning thrives here!

Dr. James Everett  
 Superintendent



**Table of Contents**

Our Schools . . . . . 4  
 District Departments . . . . . 4  
 School Start and End Times . . . . . 4  
 Key Dates . . . . . 4  
 School Board . . . . . 5  
 Stay Connected . . . . . 5  
 Communication with Families . . . . . 5  
 Emergency Information . . . . . 6  
 Safety Tip Line . . . . . 6  
 Social Media . . . . . 6  
 Accessibility . . . . . 7  
 Assessment Information . . . . . 7  
 Athletics . . . . . 7  
 Attendance and Absences . . . . . 7  
 Bus Routes . . . . . 7  
 District and School Report Cards . . . . . 7  
 Health Services . . . . . 7  
 Highly Capable Learners . . . . . 8  
 Home School Procedures . . . . . 8  
 Instructional Materials . . . . . 8  
 Integrated Pest Management  
 and Asbestos Management Plan . . . . . 8  
 Interpretation and Translation . . . . . 8  
 Internet and Technology Access . . . . . 8  
 McKinney-Vento Act . . . . . 9  
 Meal Information . . . . . 9  
 Meridian Family Support Center . . . . . 10  
 Multilingual Learners . . . . . 10  
 Non-Discrimination Policy . . . . . 10  
 Personal Property . . . . . 10  
 Release of Directory Information . . . . . 11  
 Sexual Harassment . . . . . 11  
 Special Education Services Available . . . . . 12  
 Student Emergencies . . . . . 12  
 Student Records and FERPA . . . . . 13  
 Students’ Rights and Responsibilities . . . . . 14  
 Student Safety . . . . . 14  
 Surveying Students . . . . . 14  
 Title I and Learning Assistance Program . . . 15  
 Tobacco Use on School Property . . . . . 15  
 Visiting Our Schools . . . . . 15  
 Volunteering . . . . . 15

# learning thrives here

## Vision

*In Meridian, we empower all learners to thrive academically, socially and emotionally as valued members of our local and global communities.*

## Our Commitments

### Belonging

**Meridian strives to be a welcoming place where understanding and respect are priorities. Everyone will be honored, valued and heard.**

- Learners experience a community that embraces and honors who they are.
- Everyone sees themselves represented in their educational environment.
- All voices are invited, heard and empowered.

### Communication

**Meridian commits to proactive, consistent and clear two-way communication that is accessible for all.**

- Open communication is encouraged and valued between staff, students and our community.
- Clear, consistent communication from all levels of the district supports student learning.
- Students and families are informed so they can be involved and engaged in school.

### Support

**Meridian works in partnership with staff, families, students and community to nurture success in each and every student.**

- Each learner has access to support systems and partnerships that meet their individual needs.
- Students engage in their own progress using self-assessment and goal setting.
- Every learner is included as an active partner when determining their level of support.

### Wellness

**Meridian creates an environment that supports staff and students' physical, social and emotional well-being.**

- Members of our learning community feel physically, emotionally and academically safe at school.
- Learners are supported in developing their health and wellness.
- Students are taught strategies for emotional regulation and problem-solving.

### Learning

**Meridian is guided by a commitment to equitable education that develops academic and personal skills for life.**

- Our youngest learners benefit from an inclusive and robust early educational experience.
- Each learner has access to rigorous grade-level instruction designed to meet their unique needs.
- All students make measurable growth toward meeting or exceeding proficiency on grade-level standards each year.
- Meridian graduates are prepared for their career and life goals.



## District Information

### Our Schools

#### Irene Reither Elementary School

Grades PreK-5  
360-398-2111  
954 East Hemmi Road  
Everson, WA 98247  
Principal: Tyler Dockins (right)  
Assistant Principal: Trisha Norman  
Assistant Principal: Nate Beede



#### Meridian Middle School

Grades 6-8  
360-398-2291  
861 Ten Mile Road  
Lynden, WA 98264  
Principal: Todd Torgeson (right)  
Assistant Principal: Robert Kratzig



#### Meridian High School

Grades 9-12  
360-398-8111  
194 West Laurel Road  
Bellingham, WA 98226  
Principal: Derek Forbes (right)  
Assistant Principal: Shaun Doffing



#### Meridian Parent Partnership Program

Grades K-8  
360-398-9324  
240 West Laurel Road  
Bellingham, WA 98226  
Principal: Michelle Siadal (right)



#### District Office

360-398-7111  
214 West Laurel Road  
Bellingham, WA 98226  
Superintendent: Dr. James Everett  
Assistant Superintendent: Kurt Harvill

## District Departments

#### Activities and Athletics

Bryant Michaelson, Director  
360-318-2160

#### Business and Finance

Daniel Yorton, Director  
360-988-3840

#### Food Service

Rob Dunn, Director  
360-318-2267

#### Human Resources

Julie Dodd, Coordinator  
360-318-2152

#### Maintenance and Operations

Jay Yeager, Director  
360-318-2156

#### Public Relations

Lisa Gilchrist, Director  
360-318-2159

#### Special Services

Aaron Jacoby, Director  
360-318-2155

#### Teaching and Learning

Adrienne Somera, Director  
360-318-2165

#### Technology and Assessment

Joe O'Brien, Director  
360-318-2180

#### Transportation

Michele Apeles, Director  
360-318-2171

#### Meridian Family Support Center

360-318-2486 (English)  
360-306-2886 (Spanish)  
954 East Hemmi Road, Portable 400A  
Everson, WA 98247

## School Start and End Times

#### Irene Reither Elementary School

9 a.m. to 3:40 p.m. (Monday to Thursday)  
Late Arrival: 10 a.m. to 3:40 p.m. (Friday)

#### Meridian Middle School

8:05 a.m. to 2:45 p.m. (Monday to Thursday)  
Late Arrival: 9:05 to 2:45 p.m. (Friday)

#### Meridian High School

7:55 a.m. to 2:35 p.m. (Monday to Thursday)  
Late Arrival: 8:55 a.m. to 2:35 p.m. (Friday)

#### Meridian Parent Partnership Program

9 a.m. to 2:25 p.m.  
Mondays and Wednesdays on campus

### Key Dates

Aug. 28-30: Staff Workdays (no school)  
Aug. 31: First Day of School  
Aug. 31-Sept. 8: Elementary Conferences (early dismissal for IRE)  
Sept. 4: Labor Day (no school)  
Sept. 12-14: Secondary Conferences (early dismissal for MMS/MHS)  
Oct. 20: Staff Workday (no school)  
Nov. 10: Veterans Day Observed (no school)  
Nov. 22: Early Dismissal for All Schools  
Nov. 23-24: Thanksgiving (no school)  
Dec. 18-Jan. 1: Winter Break (no school)  
Jan. 15: Martin Luther King Jr. Day (no school)  
Jan. 26: Semester Break (no school)  
Feb. 6-8: Secondary Conferences (early dismissal for MMS/MHS)  
Feb. 13-15: Elementary Conferences (early dismissal for IRE)  
Feb. 16: Mid-Winter Break (no school)  
Feb. 19: Presidents Day (no school)  
March 8: Staff Workday (no school)  
April 1-5: Spring Break (no school)  
May 10: Staff Workday (no school)  
May 27: Memorial Day (no school)  
June 5: MHS Graduation (tentative)  
June 12: Last Day of School and Early Dismissal for All Schools  
June 19: Juneteenth (no school)



## School Board

The School Board consists of five citizens of the school district elected to a four-year term of office. Any adult resident may run for election to the board providing they meet certain legal qualifications. By choice, Meridian School Board members serve without pay.

### 2023-24 Regular School Board Meetings

Meetings begin at 6 p.m.

Sept. 6, 2023	Feb. 21, 2024
Sept. 20, 2023	March 6, 2024
Oct. 4, 2023	March 20, 2024
Oct. 18, 2023	April 10, 2024
Nov. 1, 2023	April 24, 2024
Nov. 29, 2023	May 8, 2024
Dec. 13, 2023	May 22, 2024
Jan. 10, 2024	June 26, 2024
Jan. 24, 2024	July 24, 2024
Feb. 7, 2024	Aug. 21, 2024

#### Sara Bernardy, District No. 1

Term expires December 2023  
360-920-3479  
sbernardy@meridian.wednet.edu



#### Jarrod Karuza, District No. 2

Term expires December 2025  
360-398-2369  
jkaruza@meridian.wednet.edu



#### Steve Corwin, District No. 3

Term expires December 2025  
360-920-1893  
scorwin@meridian.wednet.edu



#### Marty Gray, District No. 4

Term expires December 2023  
360-510-5417  
mgray@meridian.wednet.edu



#### Craig Mitchell, District No. 5

Term expires December 2023  
360-220-6679  
cmitchell@meridian.wednet.edu



## Stay Connected

### Questions and Concerns

Parents/guardians are important partners and we expect concerns or complaints to be resolved quickly and carefully. Most complaints are resolved by addressing the persons closest to the situation. Complaints concerning school-related issues – including instruction, discipline, transportation, or building management – should first be directed to the person at the appropriate level. Visit our *Who to Contact* flowchart on our website under *Families & Students*, then *Resources*.

Contact should be made in the following order:

1. Classroom teacher/individual
2. Principal
3. Program director
4. Superintendent
5. School Board

### Communication with Families

Partnerships with families and students are essential to the success of our schools. Here are a variety of ways you can stay connected with us.

#### District and School Websites

We use our district and school websites to share helpful information including school calendars, news and updates, online payment information and more. You can also access our staff directory at [www.meridian.wednet.edu/staff](http://www.meridian.wednet.edu/staff) to find contact information for district and school staff.

#### Skyward

Skyward is our student information system. Skyward monitors student progress and is our tool to communicate important academic information including grades and attendance. Families are asked to update important forms in Skyward annually. Some of these forms are the annual health registration form, home language survey, housing questionnaire and privacy opt-out.

Please contact your child's school to confirm your

Art by Tyce Corwin, Irene Reither Elementary



Skyward Family Access login ID, have your password reset, or to have a Family Access account activated if you do not already have one. The Skyward Family Access login link is located on the top right of school and district website homepages.

#### ParentSquare

ParentSquare is our primary tool for communicating with families. Families can update their contact information and set their communication preferences. Families are defaulted to receive one email daily that captures all the communications of the day. Parents/guardians have access to a dashboard that only contains relevant information about their student(s).

Parents will automatically be opted in to receive messages and can choose to adjust their preferences by downloading the ParentSquare app or visiting [ParentSquare.com](http://ParentSquare.com).

## ParentSquare Instructions

To use ParentSquare on your phone, download the ParentSquare App in the Apple Store or Google Play Store. You can also sign in to ParentSquare at [www.parentsquare.com/signin/](http://www.parentsquare.com/signin/). Extra help and resources are available on our district website at [www.meridian.wednet.edu/parentsquare/](http://www.meridian.wednet.edu/parentsquare/).

### Activate Your Account

1. Open the invitation email or text. Click Activate Your Account or tap the link to activate your account.
2. Create a password for your ParentSquare account and click Register.
3. Click Confirm for your phone number and/or email. A verification code will be sent to the email or phone number.
4. Enter the verification code to confirm.
5. Confirm your child(ren) by clicking Confirm. Use Not My Child if a child listed is not associated with your account.
6. Select Yes, This is Me when you have confirmed your contact information and child(ren) associated with your account.

Once you are logged in to ParentSquare, you will be able to access self-paced training modules, video resources and help articles to assist you with using ParentSquare.

7. Click ? (Help) for help or your school contact information.
8. Select Help Articles to learn how to use ParentSquare.

## Social Media

Meridian School District is on social media. Follow us!



@meridianschooldistrict505



@meridianschooldistrict505



[linkedin.com/company/meridian-school-district-505/](https://www.linkedin.com/company/meridian-school-district-505/)



[youtube.com/@meridianschooldistrict505/](https://www.youtube.com/@meridianschooldistrict505/)

## Emergency Information

Depending on conditions (which could include snow, flooding, power outages, etc.), schools could close for the day, open two hours late with regular bus routes or snow bus routes, or open on time with snow bus routes.

### Notification of School Closures or Delays

An email, text, app notification and/or phone call will automatically come to you if you are a parent or guardian. You can update your contact information in Skyward Family Access or by calling your school office. Note: Alerts are sent through ParentSquare. ParentSquare uses your contact information from Skyward. You do not need to activate your account in ParentSquare to receive alerts.

### Where to Find Weather or Emergency Information

Meridian School District uses a variety of methods to keep you informed:



An email, text, app notification and/or phone call will automatically be sent to you.



Tune to local media: 790 AM, 96.5 FM, 104.1 FM or Seattle TV news stations.



Check [www.meridian.wednet.edu](http://www.meridian.wednet.edu)



Check @meridianschooldistrict505 on Facebook or Instagram.



Sign up for notifications through FlashAlert.



Call 360-318-2198 for a pre-recorded message.

## What are snow bus routes?

A snow bus route (or snow route) is a modified route that is used when road conditions are impacted by weather and driving a school bus in some areas may not be advised. Transportation will make individual arrangements for students who receive specialized transportation which do not follow the snow routes.

If snow routes are in effect, students must catch their bus at the alternate stops below:

Route 1: Van Wyck Road, Guide Meridian side: Meet at Ryzex Way, on W. Horton Rd.

Route 4: E. Horton Road: Meet at Ryzex Way, on W. Horton Rd.

Route 7: Yellow Brick Road: Meet at Kelly Rd.

Route 9: Zander Road: Meet at E. Smith Rd.

## Safety Tip Line

Our district uses Vector Alert Safety Tip Line, a tip reporting service that allows students, staff and parents to submit safety concerns to our administration by phone: 855-977-0973, text: 855-977-0973, email: [1449@alert1.us](mailto:1449@alert1.us), online at <http://1449.alert1.us> or using the QR code below.

You and your child can easily report tips on bullying, harassment, drugs, vandalism or any safety issue you're concerned about through Vector Alert. Every tip about our district is immediately logged in the system and our administration is notified so that they can investigate and take appropriate action. Tips may be submitted anonymously. When submitting a tip please include details and as much information as possible. To learn more about school safety visit our website at [www.meridian.wednet.edu/school-safety/](http://www.meridian.wednet.edu/school-safety/).





## Annual Notifications

### Accessibility

The district ensures that each program, service or activity when reviewed in its entirety, is readily accessible to and usable by individuals with disabilities per the Americans with Disabilities Act (ADA). Some of our schools or programs may not be accessible. If you require special accommodations, please contact the school principal or call 360-398-7111 for assistance.

### Assessment Information

State assessments occur in the spring for students in grades 3–8 and 10. English language arts (ELA) and math are measured with Smarter Balanced Assessments (SBA). Science is measured with the Washington Comprehensive Assessment of Science (WCAS) in grades 5, 8 and 11. The results from the state assessments help us improve instructional practices and give families information about how their student is doing and where additional help might be needed. For students in grade 10, the Smarter Balanced tests can also be used as a graduation pathway. For information on Washington State Assessments, visit the OSPI website at [www.k12.wa.us/student-success/testing](http://www.k12.wa.us/student-success/testing).

### Athletics

Prior to participating on any school team, students must have the following turned in: up-to-date sports physical, proof of insurance, inherent risk form, concussion form, and sudden cardiac arrest form. Forms will be available through FinalForms by Aug. 2. Students must also meet residence and academic requirements for eligibility. Please contact Bryant Michaelson, Activities and Athletics Director, at (360) 318-2160 or visit [www.meridian.wednet.edu/activities-and-athletics/](http://www.meridian.wednet.edu/activities-and-athletics/) for more information.

### Attendance and Absences

It is important for students to attend school daily and on-time. Under state law (RCW 28A.225), students are required to attend school full-time, without unexcused absences, skips or tardiness. Students should attend all

scheduled classes unless officially excused. Absences, unless waived by the principal, require either a written/signed excuse, a phone call or an email from a parent/guardian. Parents/guardians are notified by the school of any unexcused absences, typically by phone. Make sure your contact information is correct and updated in Skyward Family Access to receive these important notifications. State law requires the district to file a petition with the juvenile court for students if they accumulate seven days of unexcused absences in any month or 15 days of unexcused absences in a school year. They may be referred to a Community Engagement Board. The family will make a plan with the board to improve attendance. If attendance does not improve, the court will order the student to attend school. A student who does not comply with a court order to attend school may be found in contempt of court.

### Bus Routes

Transportation questions may be directed to your school office or to the Transportation Department at 360-318-2172. Routes will be available to view beginning Aug. 18 on our website at [www.meridian.wednet.edu/transportation/](http://www.meridian.wednet.edu/transportation/) or through the Stopfinder app.

### Bus Rider Expectations

Our transportation team is dedicated to creating a safe, welcoming and respectful environment on all of our buses and at the bus stops. Our drivers will teach and model for students how to be respectful, responsible, safe and kind while on the bus. The following are rider expectations:

- Listen to and follow the bus drivers instructions.
- Stay seated at all times and use an indoor voice.
- Keep items inside the bus and outside of the aisle.
- Use headphones and electronics with the sound off.
- Use respectful, responsible, safe and kind behavior.
- Help keep the bus clean, no food or drinks allowed.

### District and School Report Cards

Meridian School District and school reports which include demographic information and academic achievement can be accessed from our website at [www.meridian.wednet.edu/our-district/](http://www.meridian.wednet.edu/our-district/) or by visiting <http://reportcard.ospi.k12.wa.us>.

*Art by Sanjay Neger, Irene Reither Elementary*



### Health Services

We believe healthy children are successful learners. Our health services staff support student success through assessment, intervention and follow-up care for students. We support the health and well-being of students and staff by integrating health solutions and partnering with parents and health care providers.

### Health Screenings

School personnel provide screenings of vision, both near/distance, and hearing, of students in grades K-5 and 7 per RCW 28A.210.020.

### Immunizations

Before children can attend school, parents/guardians must provide medically-verified proof that a schedule of immunization has begun or a certificate of exemption.



Immunization must be provided against diphtheria, pertussis (whooping cough), tetanus, polio, mumps, measles, rubella, hepatitis B and varicella. Immunizations protect the health of your child, and the health of others. For more information about immunization requirements, visit the Department of Health's website at [www.doh.wa.gov/community-and-environment/schools/immunization#reqs](http://www.doh.wa.gov/community-and-environment/schools/immunization#reqs) or talk to your health care provider.

### MyIR

MyIR allows you to manage your family's immunization records securely online. Once registered, you can access the records any time you need them. You can also print your child's Certificate of Immunization Status (CIS) for school or child care. Parents can print your child's CIS form at home without a trip to the doctor's office by signing up with the Washington Immunization

Information System and logging in to MyIR at this link: <https://wa.myir.net/>.

If your medical provider does not use the Washington Immunization Information System you can email [waisrecords@doh.wa.gov](mailto:waisrecords@doh.wa.gov) or call 1-866-397-0337 to request a copy of your child's CIS.

### Medications at School and Life Threatening Conditions

If a student requires medication, either prescription or non-prescription, at school, parents/guardians must return a completed annual health registration form to the student's school with written authorization and directions for a licensed health care provider. Forms and more information are available at our schools, in Skyward Family Access or on our website: [www.meridian.wednet.edu/health-services/](http://www.meridian.wednet.edu/health-services/).

Inform your school nurse about any student health concerns. Washington State law requires that prior to the start of the school year and annually after, any student determined to have a potentially life threatening condition must have current health care provider orders, medications, equipment and care plans, including school staff training, prior to attending school. The school nurse and parent/guardian will develop an emergency/individual health plan.

### Highly Capable Learners

Once a student is identified with unique learning skill sets, Meridian School District matches them up with district services to meet their needs. Timeline and referral forms are available online and at your child's school. For more information, please contact the Department of Teaching and Learning at 360-318-2165 or visit [www.meridian.wednet.edu/programs/highly-capable/](http://www.meridian.wednet.edu/programs/highly-capable/).

### Home School Procedures

A parent who intends to have their child or children receive home-based instruction in lieu of attendance or enrollment in a public school or approved private school must file an annual declaration of intent to do so. The appropriate form may be obtained from the District Office. The form must be filed by Sept. 15.

### Instructional Materials

Parents/guardians have the right to inspect any core district instructional materials. Requests to review materials should be made in writing to the Department of Teaching and Learning or by calling 360-318-2165. A list of district-approved curriculum can be found at [www.meridian.wednet.edu/instructional-materials/](http://www.meridian.wednet.edu/instructional-materials/).

### Integrated Pest Management and Asbestos Management Plan

School districts are required to notify the public of pest control and herbicide use. The district manages vegetation and pests using a minimum of pesticides. When pesticides are used, notification signs are posted at buildings 48 hours prior to pesticide use and for 24 hours after.

The 1986 Asbestos Hazardous Emergency Response Act (AHERA) requires school districts to identify buildings that contain asbestos. The act also requires school facilities to maintain written management plans. Detailed reports of both pesticide use and asbestos records are available at individual schools, at Maintenance and Operations or by calling 360-398-7111.

### Interpretation and Translation

The district provides free interpretation and translation services and follows the Language Access Plan with policy and procedure 4218. This is our annual notification of that plan. Staff are provided with written guidance on how and when interpretation and translation services should be accessed. This written guidance will be updated as needed to reflect available services. If you need interpretation or translation services please contact your school. For our families who speak Spanish, please contact our cultural liaison at 360-306-2886.

### Internet and Technology Access

Meridian School District provides a Chromebook to students in grades 2-12 and an iPad for students in kindergarten and first grade. We use Google's G Suite for Education and Google Classroom to enhance your student's educational experience. We are excited by the learning opportunities these devices provide students.



Google's G Suite for Education is a set of communication and collaboration tools used by tens of millions of students and teachers around the world. In combination with Google Classroom, Meridian students will use their G Suite account to connect with engaging and meaningful learning while developing the 21<sup>st</sup> Century Skills they will use in their future careers.

Federal law protects the privacy of student educational records and limits the information that can be collected. More information about Google G Suite and student devices can be found on our website at [www.meridian.wednet.edu/tech-resources/](http://www.meridian.wednet.edu/tech-resources/).

In Meridian School District we use GoGuardian and LightSpeed to monitor student device use and to restrict specific programs or websites.



Art by Carley Crawford, MP3

### GoGuardian Parent App

Parents/guardians can also monitor student's activity on school-issued Chromebooks by using GoGuardian Parent App. The app provides you with additional controls during out-of-school hours.

GoGuardian Parent is a companion to the classroom management and internet filtering tools that your child's school uses for devices issued to students. Through the use of this app, we hope to encourage more open and honest conversations between parents and children that will result in safer practices and responsible browsing habits. Learn more on our website at [www.meridian.wednet.edu/goguardian/](http://www.meridian.wednet.edu/goguardian/).

### Device Care

Like textbooks, library books, athletic equipment and other school property issued to your student, there is a responsibility to take proper care of these valuable resources. A Chromebook or iPad is no different and we know that our students and parents will take appropriate precautions to avoid accidental damage, misuse or abuse.

You may be held responsible for the cost of repair or replacement where failure to exercise proper care results in damage to or loss of the device. If you need help or support with your child's school device please contact [techhelp@meridian.wednet.edu](mailto:techhelp@meridian.wednet.edu).

### McKinney-Vento Act

The McKinney-Vento Act defines homeless children or unaccompanied youth as lacking a fixed, regular and adequate nighttime residence, which includes:

- Families doubled up with friends or relatives due to loss of housing.
- Children living in motels, hotels, trailer parks and campgrounds due to lack of alternative accommodations.
- Children living in emergency or transitional shelters.
- Children living in cars, parks, public spaces, abandoned buildings, substandard housing, and bus or train stations.

The McKinney-Vento Act ensures that children have a

Art by Kate Prengaman, Meridian High School



right to:

- Attend the school they last attended before they became homeless (school of origin) OR enroll in their neighborhood school.
- Immediate enrollment in school even if they lack required documents, such as school records, immunization records, or proof of residence.
- Free transportation to school of origin, when feasible.
- Free meals at school.
- Assistance for school fees, school supplies and connecting to social service supports.

Please contact your child's school counselor or homeless liaison at 360-318-2486.

### Meal Information

School meals, including breakfast and lunch, are served

at all schools. It is our goal to provide nourishing meals for students who choose to participate in this program. Free and reduced-price meals are available to those that qualify. It is important to note that funding for many district programs may increase when more families qualify for free or reduced-price meals. Because of this, we encourage parents to fill out the forms and take advantage of this program. Also, all students should know that their participation in qualifying for and receiving free or reduced-price meals is completely confidential. Other students will have no way of knowing if their classmates are receiving this benefit. A new application must be completed each year. Visit [www.meridian.wednet.edu/food-service-program/](http://www.meridian.wednet.edu/food-service-program/) for more information.

### Meridian Family Support Center

The Meridian Family Support Center is located at Irene Reither Elementary School in portable 400A (954 E. Hemmi Rd.). During the school year, the center is open from 8:30 a.m. to 3:30 p.m., Monday through Friday and Wednesdays 8:30 a.m. to 6 p.m. The family center can assist with basic needs such as food, clothing, hygiene supplies and more. Families who would like to visit the clothing closet which includes clothing for both kids and adults should make an appointment by contacting the family center at 360-318-2486.

Community donations of new and gently used clothing (kid and adult), shoes kitchenware and linens that are still in excellent condition can be brought to the family center during business hours.

### Multilingual Learners

Multilingual Learners refers to students who have consistent experience with multiple languages. These students may have a current proficiency level in English that qualifies them for additional language support through the Washington State Transitional Bilingual Instructional Program (TBIP). The goal of the program is to assist students in developing their English language proficiency and grade-level content knowledge at the same time.

#### Program Definition

Washington State law WAC 392-160 defines “Transitional

Bilingual Instruction Program” as a system of instruction which:

- Uses two languages, one of which is English, as a means of instruction to build upon and expand language skills to enable a student to achieve competency in English.
- Teaches concepts and knowledge in the primary language of a student, while the student also acquires English language skills.
- Tests students in the subject matter in English.

#### How are students identified for multilingual services?

All families fill out the home language survey when they enroll their children. This asks what language the student first learned. If it is not English, staff assesses the student’s English skills. Based on the results, the student may qualify for multilingual learner services. Learn more about the multilingual education program on OSPI’s website, <https://www.k12.wa.us/student-success/access-opportunity-education/migrant-and-multilingual-education/multilingual-education-program>.

### Non-Discrimination Policy

Meridian School District does not discriminate in any programs or activities on the basis of sex, race, creed, religion, color, national origin, age, veteran or military status, sexual orientation, gender expression or identity, disability, or the use of a trained dog guide or service animal and provides equal access to the Boy Scouts and other designated youth groups. The following employee(s) has been designated to handle questions and complaints of alleged discrimination: Title IX and Compliance Coordinator (RCW 28A.640/28A.642) Kurt Harvill, Assistant Superintendent, [khavill@meridian.wednet.edu](mailto:khavill@meridian.wednet.edu). Section 504 questions and complaints can be directed to Aaron Jacoby, [ajacoby@meridian.wednet.edu](mailto:ajacoby@meridian.wednet.edu). The mailing address for each coordinator is Meridian School District 214 W. Laurel Rd., Bellingham, WA 98226 and phone number is 360-398-7111.

### Personal Property

Students bringing personal property on district property and on school buses do so at their own risk. The district does not assume responsibility for lost, damaged or stolen property. Parking on district property is at the



Art by Brooklyn Thomas, Meridian Middle School





owner's/driver's own risk. The district does not assume responsibility for damage to or loss of privately owned vehicles or property in vehicles.

### Release of Directory Information

Federal law requires an annual reminder to parents that the school district is permitted to publicly release certain information about students such as name, photograph, address, telephone number, date and place of birth, dates of attendance, participation in officially recognized sports and activities, weight and height of members of athletic teams, diplomas and awards received and honor roll. Such information is not released for commercial purposes. We make every reasonable effort to protect the privacy of students.

### Release of Information to Military Recruiters

Federal Elementary and Secondary Education Act legislation requires that directory information for 11th and 12th grade students be provided to military recruiters unless parents/guardians object. If you object to your high school student's information being included on the list given to military recruiters, please check the appropriate box in Skyward Family Access. If you have questions or need support, please contact your school office.

### Military Affiliation Data

The Washington State Legislature passed a law requiring Washington State public schools to collect information on family military affiliation (SB 5163 - 2015-16). This required information is collected annually by the end of September.

### Photo and Video

Meridian School District staff may record videos or take photographs of students for use in district or school-produced publications, or for use on the website or in the news media. If you do not grant permission, please check the appropriate box in Skyward Family Access. If you have questions or need support, please contact your school office.

### Sexual Harassment

The district is committed to a positive and productive education free from discrimination, including sexual harassment. This commitment extends to all students involved in academic, educational, extracurricular, athletic, and other programs or activities of the school, whether that program or activity is in a school facility, on school transportation or at a class or school training held elsewhere. Sexual harassment means unwelcome conduct or communication of a sexual nature.

The term "sexual harassment" may include:

- acts of sexual violence;
- unwelcome sexual or gender-directed conduct or communication that interferes with an individual's educational performance or creates an intimidating, hostile, or offensive environment;
- unwelcome sexual advances;
- unwelcome requests for sexual favors;

- sexual demands when submission is a stated or implied condition of obtaining an educational benefit;
- sexual demands where submission or rejection is a factor in an academic, or other school-related decision affecting an individual.

You can report sexual harassment to any school staff member or to the district's Title IX Officer. You also have the right to file a complaint. A copy of policy and procedure 3205 and 5011 are available online at [www.meridian.wednet.edu](http://www.meridian.wednet.edu), at your school, or at the District Office, 214 W. Laurel Rd, Bellingham, WA 98226 or by calling 360-398-7111.

### Complaint Options: Discrimination and Sexual Harassment

If you believe you or your child experienced unlawful discrimination, discriminatory harassment, or sexual harassment at school, you have the right to file a complaint. Before filing a complaint, you can discuss your concerns with your child's principal or with the district's Section 504 coordinator, Title IX officer, or civil rights coordinator. This is often the fastest way to resolve your concerns.

### File a Complaint

#### Step 1. Write Out Your Complaint

In most cases, complaints must be filed within one year from the date of the incident or conduct that is the subject of the complaint. A complaint must be in writing. Be sure to describe the conduct or incident, explain why you believe discrimination, discriminatory harassment, or sexual harassment has taken place, and describe what actions you believe the district should take to resolve the problem. Send your written complaint by mail, fax, email or hand delivery to the superintendent or civil rights compliance coordinator.

#### Step 2: School District Investigates Your Complaint

Once the district receives your written complaint, the coordinator will give you a copy of the complaint procedure and make sure a prompt and thorough investigation takes place. The superintendent or designee

will respond to you in writing within 30 calendar days, unless you agree on a different time period. If your complaint involves exceptional circumstances that demand a lengthier investigation, the district will notify you in writing to explain why staff needs a time extension and the new date for their written response.

### *Step 3: School District Responds to Your Complaint*

In its written response, the district will include a summary of the results of the investigation, a determination of whether or not the district failed to comply with civil rights laws, notification that you can appeal this determination, and any measures necessary to bring the district into compliance with civil rights laws. Corrective measures will be put into effect within 30 calendar days after this written response, unless you agree to a different time period.

### **Appeal Process**

If you disagree with the district's decision, you may appeal to the district's board of directors. You must file a notice of appeal in writing to the secretary of the School Board within 10 calendar days after you received the district's response to your complaint. The School Board will schedule a hearing within 20 calendar days after they received your appeal unless you agree on a different timeline. The School Board will send you a written decision within 30 calendar days after the district received your notice of appeal. The School Board's decision will include information about how to file a complaint with the Office of Superintendent of Public Instruction (OSPI).

### **Special Education Services Available**

To better serve students and to meet federal rules and regulations, Meridian School District would like to know if your child is having difficulty in areas of development that cause you concern. Meridian School District will work with you to better understand the process used to determine whether or not your child may be eligible for Special Education services. Students from birth to 21 who have an identified disability and would receive educational benefit from specialized instruction are the focus of Special Education services.



*Art by Victoria Malave, MP3*

### **Child Find Notice**

Meridian School District is committed to early identification of children with disabilities. The Child Find Program is designed to locate, evaluate, and identify children with suspected disabilities who may be in need of Special Education services, including those who are not currently receiving services. Eligible students between the ages of three and 21 years of age who reside within the Meridian School District may receive Special Education and related services. Children ages birth to two-years-old are referred to their physicians and community agencies. We seek to reach:

- Children residing in school district boundaries, including preschool aged children;
- Children attending approved, nonprofit private elementary and secondary schools located within the district boundaries;

- Highly mobile children (such as homeless, foster care and migrant children);
- Children who have a disability and may need Special Education services, even though they are advancing from grade to grade; and
- Children at home or homeschooled.

Any person who observes a child they suspect may have a disability may refer the child to the district for screening and possible assessment to determine eligibility. Upon completion of the screening, a member of the evaluation team will explain the results to the child's parents or guardian. If the screening results indicate the child is having difficulty in one or more areas, a referral is made for a comprehensive Special Education evaluation. Eligible preschool students are entitled to individualized, quality early intervention Special Education services in accordance with the federal Individuals with Disabilities Education Act (IDEA), Part B.

If you have concerns about your child's development in the areas of language, hearing, vision, social emotional, cognitive, gross motor, fine motor and self-help skills, you are encouraged to contact Director of Special Services, Aaron Jacoby, [ajacoby@meridian.wednet.edu](mailto:ajacoby@meridian.wednet.edu) or 360-318-2155.

For an overview on child development and guidance in determining whether to seek help and support, visit [www.cdc.gov/ncbddd/actearly/milestones/index.html](http://www.cdc.gov/ncbddd/actearly/milestones/index.html).

### **Section 504**

Students who have a disability or a suspected disability within the definition of Section 504 of the Rehabilitation Act of 1973 are identified, evaluated and provided with appropriate services. Students may be disabled under this section even though they do not require services pursuant to the Individuals with Disabilities Education Act (IDEA). Please call Special Services at 360-318-2154 for more information.

### **Student Emergencies**

In case of a serious injury or illness at school, the school will first call the phone number listed as the primary contact in Skyward Family Access. If a parent or guardian



cannot be reached at that number, the next person listed on the student's emergency information will be called. Please fill out the emergency enrollment form completely and accurately. If there is a change of address or phone number at any time during the school year, please update the information with your student's school office promptly, or using Skyward Family Access.

## Student Records and FERPA

Student records are confidential to protect the rights and privacy of both students and parents. In most cases, parents have the right to refuse to permit a school to release information about their children. Federal law requires parental permission, or the student's if 18 or older, before disclosing information, other than directory information, from student educational records.

Directory information is not covered by the privacy law and includes a student's name, address, phone number, date of birth, dates of attendance, participation in activities, awards received, and other information. Videos and photographs are sometimes released in district, school and community newspapers or on broadcast media when students receive awards or participate in school activities. If you do not want your child's photograph or directory information released, please notify the school district by making this selection in Skyward Family Access. If you have questions, please contact your school office.

The Family Educational Rights and Privacy Act (FERPA) (20 U.S.C. § 1232g; 34 CFR Part 99) is a Federal law that protects the privacy of student education records. The law applies to all schools that receive funds under an applicable program of the U.S. Department of Education.

The Act gives parents certain rights with respect to their children's education records. These rights transfer to the student when they reach the age of 18 or attend a school beyond the high school level. Students to whom the rights have transferred are considered eligible students. Parents or eligible students have the right to inspect and review the student's education records maintained by the school. Schools are not required to provide copies of records, unless for reasons such as great distance, it is impossible

for parents or eligible students to review the records. Schools may charge a fee for copies.

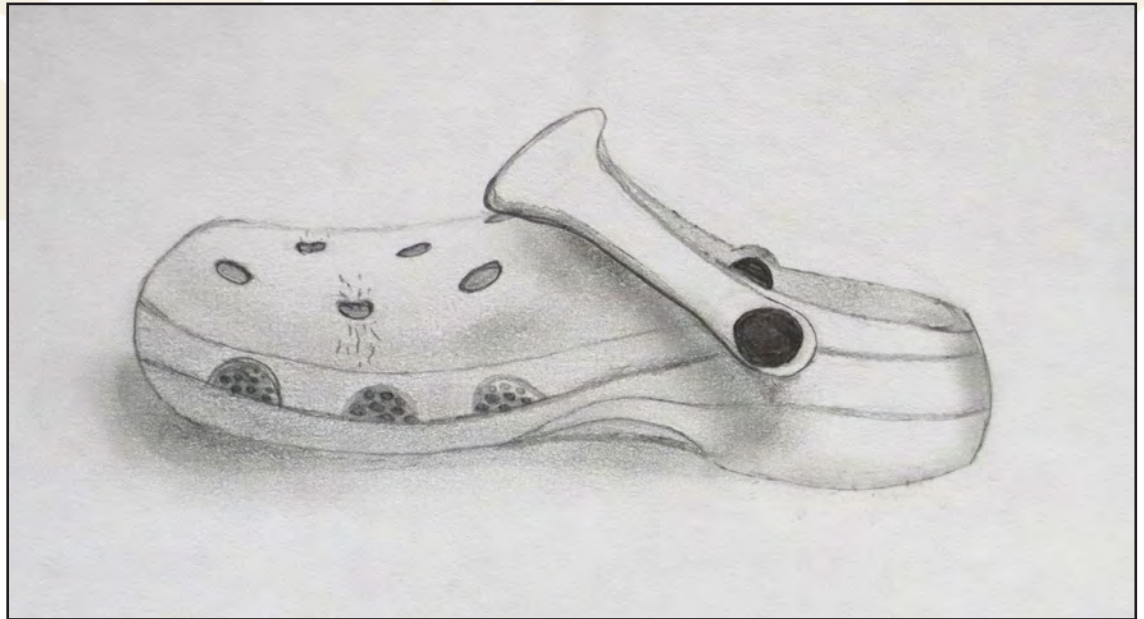
Parents or eligible students have the right to request that a school correct records that they believe to be inaccurate or misleading. If the school decides not to amend the record, the parent or eligible student then has the right to a formal hearing. After the hearing, if the school still decides not to amend the record, the parent or eligible student has the right to place a statement with the record setting forth their view about the contested information.

Generally, schools must have written permission from the parent or eligible student in order to release any information from a student's education record. However, FERPA allows schools to disclose those records, without consent, to the following parties or under the following conditions (34 CFR § 99.31):

- School officials with legitimate educational interest;
- Other schools to which a student is transferring;
- Specified officials for audit or evaluation purposes;

- Appropriate parties in connection with financial aid to a student;
- Organizations conducting certain studies for, or on behalf of the school;
- Accrediting organizations;
- To comply with a judicial order or lawfully issued subpoena;
- Appropriate officials in cases of health and safety emergencies; and
- State and local authorities, within a juvenile justice system, pursuant to specific state law.

Schools may disclose, without consent, directory information such as a student's name, address, telephone number, date and place of birth, honors and awards, and dates of attendance. However, schools must tell parents and eligible students about directory information and allow parents and eligible students a reasonable amount of time to request that the school not disclose directory information about them. Schools must notify parents and eligible students annually of their rights under FERPA.



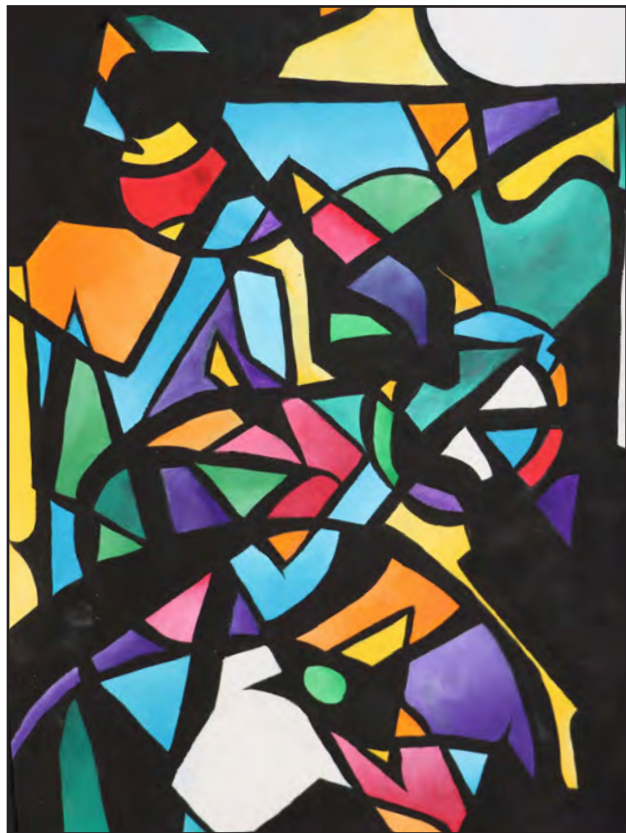
Art by Emersyn Sobjack, Meridian Middle School

The actual means of notification (special letter, inclusion in a PTA bulletin, student handbook or newspaper article) is left to the discretion of each school.

For additional information, you may call 1-800-USALEARN (1-800-872-5327) (voice). Individuals who use TDD may use the Federal Relay Service. Or you may contact us at the following address:

Family Policy Compliance Office  
U.S. Department of Education  
400 Maryland Avenue, SW  
Washington, D.C. 20202-8520

Parents have the right to review any and all student records with the principal. Please schedule an appointment with the principal should you wish to do so.



Art by Mallory Warnock, Meridian High School

## Students' Rights and Responsibilities

Meridian School District is dedicated to achieving academic excellence while developing self-directed, lifelong learners, respecting individual differences and preparing responsible citizens.

To provide information to parents regarding the policies and regulations for students, each school has developed a Student Rights and Responsibilities Handbook in accordance with policy 3200, which describes:

- The responsibilities of students to maintain a school attitude and behavior, which is safe, orderly and promotes a positive learning climate;
- The rights of students to humane, professional and legal treatment in school;
- Additional policies and regulations that affect students.

A copy of policy 3200 is available online at [www.meridian.wednet.edu](http://www.meridian.wednet.edu) or at the District Office, 214 W. Laurel Rd, Bellingham, WA 98226.

## Student Safety

Meridian School District is committed to a safe educational environment for all students that is free from harassment, intimidation or bullying. In order to ensure respect and prevent harm, it is a violation of policy 3207 for a student to be harassed, intimidated, or bullied by others in the school community, at school sponsored events, or when such actions create a substantial disruption to the educational process.

## Emergency Preparedness

The safety of our students and staff is a top priority. By law, all of our schools are required to conduct at least one drill a month and must practice three basic functional responses: shelter-in-place, lock down, and evacuation. Schools also conduct at least one earthquake drill each year. These regular drills are meant to make systematic responses second nature for staff and students.

Learn more about these drills on our website at [www.meridian.wednet.edu/school-safety/](http://www.meridian.wednet.edu/school-safety/).

## Harassment, Intimidation and Bullying

Meridian School District is committed to a safe educational environment for all students that is free from harassment, intimidation or bullying. In order to ensure respect and prevent harm, it is a violation of policy 3207 for a student to be harassed, intimidated, or bullied by others in the school community, at school sponsored events, or when such actions create a substantial disruption to the educational process. Prohibition of Harassment, Intimidation, and Bullying Regulation is explained in procedure 3207P.

Anyone who believes that harassment, intimidation or bullying has occurred should report the behavior to a teacher, counselor, school nurse or school administrator. To report unresolved, severe or persistent harassment, you can:

- Contact the administrator at the targeted student's school.
- Contact the District Office at 360-398-7111.
- Use the Vector Alert system to report online, by text, or by phone.
- Print and complete the HIB reporting form available on our website at [www.meridian.wednet.edu/school-safety/](http://www.meridian.wednet.edu/school-safety/).



## Surveying Students

Students may be asked to complete surveys or questionnaires to improve the operation or effectiveness of our district. These surveys are anonymous and are not connected with students or their records. Parents/guardians will be notified if surveys contain sensitive questions or when a personal interview is included. In such cases, parents/guardians or student (if 18 or older) may decline participation. Meridian School District must inform parents/guardians whenever students will be surveyed in any of the following areas so they can review the survey and have an opportunity to opt out, according to the Family Educational Rights and Privacy Act (FERPA) and the Protection of Pupil Rights Amendment. Those areas are: political affiliations/beliefs of the student/student's parent/guardian; mental or psychological problems of the student/student's family; sexual behavior or attitudes; illegal, anti-social, self-incriminating or demeaning behavior; critical appraisals of others with



whom respondents have close family relationships; legally recognized privileges or analogous relationships such as those of lawyers, physicians and ministers; religious practices, affiliations or beliefs of the student/student's family; or income (other than that required by law to determined eligibility for participation in a program for receiving financial assistance under such programs.)

### **Title I and Learning Assistance Program**

Schools that have a free and reduced lunch percentage at or above the district average qualify for additional funding through a Title I federal grant. Funds are used to support students who would benefit from additional academic assistance. In Meridian School District, Irene Reither Elementary School qualifies for Title I federal funding. Title I information is available from the school office or our website at [www.meridian.wednet.edu/programs/title-i/](http://www.meridian.wednet.edu/programs/title-i/).

The Learning Assistance Program (LAP) provides targeted assistance to students below grade level in reading or math, and in some cases for behavior. Information about the LAP program can be found on our website at [www.meridian.wednet.edu/programs/learning-assistance-program/](http://www.meridian.wednet.edu/programs/learning-assistance-program/).

### **Tobacco Use on School Property**

In compliance with state law, Meridian School District policy prohibits smoking or any other use of tobacco products on all school property. The public is asked to remember that the smoking ban includes all buildings and grounds and is 24 hours a day. Also in compliance with state law and district policy, all school buildings, grounds and buses are drug-free and gun-free zones. Vaping and e-cigarettes are also prohibited on school grounds.

### **Visiting Our Schools**

We request that all visitors check in at school offices and follow procedures. Guidelines for visits to schools are available at our schools and are listed in policy and procedure 4200.

### **Volunteering**

Volunteers provide invaluable support to our schools. All volunteers are required to complete a background check with Washington State Patrol. Please contact the school you would like to volunteer at to start the process.

### **Washington State Governor's Office of the Education Ombuds**

The Washington State Office of Education Ombuds (OEO) listens, shares information and referrals, and works with families, communities, and schools to address concerns so that every student can fully participate and thrive in our state's public schools. OEO provides support in multiple languages and has telephone interpretation available. To get help or learn more about what OEO does, please visit our website: <https://www.oeo.wa.gov/en>; email [oeoinfo@gov.wa.gov](mailto:oeoinfo@gov.wa.gov), or call: 1-866-297-2597 (interpretation available).

The Washington State Governor's Office of the Education Ombuds (OEO) is an independent state agency that helps to reduce educational opportunity gaps by supporting families, students, educators, and other stakeholders in communities across WA in understanding the K-12 school system and resolving concerns collaboratively. OEO services are free and confidential. Anyone can contact OEO with a question or concern about K-12 public schools.



*Art by Japleen Atwal  
Meridian High School*



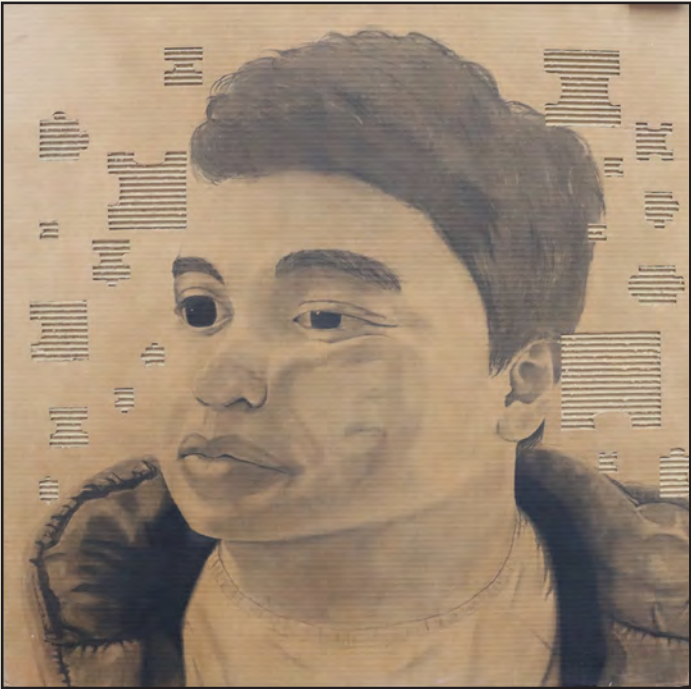
*Art by Mariel Schmidt  
Meridian High School*



Art by Jasmine Brennan, Meridian High School



Art by Savannah Storgaard, Meridian High School



Art by Bryan Cunanan, Meridian High School

August 2023

Sunday	Monday	Tuesday	Wednesday	Thursday	Friday	Saturday																																																																													
<div>July</div> <table><tr><td></td><td></td><td></td><td></td><td></td><td></td><td>1</td></tr><tr><td>2</td><td>3</td><td>4</td><td>5</td><td>6</td><td>7</td><td>8</td></tr><tr><td>9</td><td>10</td><td>11</td><td>12</td><td>13</td><td>14</td><td>15</td></tr><tr><td>16</td><td>17</td><td>18</td><td>19</td><td>20</td><td>21</td><td>22</td></tr><tr><td>23</td><td>24</td><td>25</td><td>26</td><td>27</td><td>28</td><td>29</td></tr><tr><td>30</td><td>31</td><td></td><td></td><td></td><td></td><td></td></tr></table>							1	2	3	4	5	6	7	8	9	10	11	12	13	14	15	16	17	18	19	20	21	22	23	24	25	26	27	28	29	30	31						<div>September</div> <table><tr><td></td><td></td><td></td><td></td><td></td><td>1</td><td>2</td></tr><tr><td>3</td><td>4</td><td>5</td><td>6</td><td>7</td><td>8</td><td>9</td></tr><tr><td>10</td><td>11</td><td>12</td><td>13</td><td>14</td><td>15</td><td>16</td></tr><tr><td>17</td><td>18</td><td>19</td><td>20</td><td>21</td><td>22</td><td>23</td></tr><tr><td>24</td><td>25</td><td>26</td><td>27</td><td>28</td><td>29</td><td>30</td></tr></table>						1	2	3	4	5	6	7	8	9	10	11	12	13	14	15	16	17	18	19	20	21	22	23	24	25	26	27	28	29	30	1	2	3	4	5
						1																																																																													
2	3	4	5	6	7	8																																																																													
9	10	11	12	13	14	15																																																																													
16	17	18	19	20	21	22																																																																													
23	24	25	26	27	28	29																																																																													
30	31																																																																																		
					1	2																																																																													
3	4	5	6	7	8	9																																																																													
10	11	12	13	14	15	16																																																																													
17	18	19	20	21	22	23																																																																													
24	25	26	27	28	29	30																																																																													
6	7	8	9	10	11	12																																																																													
13	14	15	16	17	18	19																																																																													
20	21	22	23	24	25	26																																																																													
27	28	29	30	31																																																																															
	No School Staff Workday	No School Staff Workday	No School Staff Workday	First Day of School Grades 1-12 MP3: First Day of Student Learning Plans																																																																															





Art by Suri Gehrig, Meridian High School

September 2023

Hispanic Heritage Month  
(Sept. 15-Oct. 15)  
Attendance Awareness Month

Sunday	Monday	Tuesday	Wednesday	Thursday	Friday	Saturday																																																																																				
<div>August</div> <table><tr><td>S</td><td>M</td><td>T</td><td>W</td><td>T</td><td>F</td><td>S</td></tr><tr><td></td><td></td><td>1</td><td>2</td><td>3</td><td>4</td><td>5</td></tr><tr><td>6</td><td>7</td><td>8</td><td>9</td><td>10</td><td>11</td><td>12</td></tr><tr><td>13</td><td>14</td><td>15</td><td>16</td><td>17</td><td>18</td><td>19</td></tr><tr><td>20</td><td>21</td><td>22</td><td>23</td><td>24</td><td>25</td><td>26</td></tr><tr><td>27</td><td>28</td><td>29</td><td>30</td><td>31</td><td></td><td></td></tr></table>	S	M	T	W	T	F	S			1	2	3	4	5	6	7	8	9	10	11	12	13	14	15	16	17	18	19	20	21	22	23	24	25	26	27	28	29	30	31			<div>October</div> <table><tr><td>S</td><td>M</td><td>T</td><td>W</td><td>T</td><td>F</td><td>S</td></tr><tr><td>1</td><td>2</td><td>3</td><td>4</td><td>5</td><td>6</td><td>7</td></tr><tr><td>8</td><td>9</td><td>10</td><td>11</td><td>12</td><td>13</td><td>14</td></tr><tr><td>15</td><td>16</td><td>17</td><td>18</td><td>19</td><td>20</td><td>21</td></tr><tr><td>22</td><td>23</td><td>24</td><td>25</td><td>26</td><td>27</td><td>28</td></tr><tr><td>29</td><td>30</td><td>31</td><td></td><td></td><td></td><td></td></tr></table>	S	M	T	W	T	F	S	1	2	3	4	5	6	7	8	9	10	11	12	13	14	15	16	17	18	19	20	21	22	23	24	25	26	27	28	29	30	31								<b>1</b>  <i>Elementary Conferences</i> <i>IRE dismissal 1:15 p.m.</i>  <i>1- Hour Late Arrival</i>	<b>2</b>
S	M	T	W	T	F	S																																																																																				
		1	2	3	4	5																																																																																				
6	7	8	9	10	11	12																																																																																				
13	14	15	16	17	18	19																																																																																				
20	21	22	23	24	25	26																																																																																				
27	28	29	30	31																																																																																						
S	M	T	W	T	F	S																																																																																				
1	2	3	4	5	6	7																																																																																				
8	9	10	11	12	13	14																																																																																				
15	16	17	18	19	20	21																																																																																				
22	23	24	25	26	27	28																																																																																				
29	30	31																																																																																								
<b>3</b>	<b>4</b>  No School Labor Day	<b>5</b>  <i>Elementary Conferences</i> <i>IRE dismissal 1:15 p.m.</i>	<b>6</b>  MP3: Campus Open House IRE: First Day of Kindergarten <i>Elementary Conferences</i> <i>IRE dismissal 1:15 p.m.</i> Regular School Board Meeting, 6 p.m.	<b>7</b>  <i>Elementary Conferences</i> <i>IRE dismissal 1:15 p.m.</i>	<b>8</b>  <i>Elementary Conferences</i> <i>IRE dismissal 1:15 p.m.</i>  <i>1- Hour Late Arrival</i>	<b>9</b>																																																																																				
<b>10</b>	<b>11</b>  MP3: First Day of Campus Classes	<b>12</b>  <i>Secondary Conferences</i> <i>MHS dismissal 12:10 p.m.</i> <i>MMS dismissal 12:20 p.m.</i>	<b>13</b>  <i>Secondary Conferences</i> <i>MHS dismissal 12:10 p.m.</i> <i>MMS dismissal 12:20 p.m.</i>	<b>14</b>  MHS: Open House 6:30 p.m. <i>Secondary Conferences</i> <i>MHS dismissal 12:10 p.m.</i> <i>MMS dismissal 12:20 p.m.</i>	<b>15</b>  <i>1- Hour Late Arrival</i>	<b>16</b>																																																																																				
<b>17</b>  Constitution and Citizenship Day	<b>18</b>  MP3: Picture Day	<b>19</b>  MMS: Picture Day	<b>20</b>  Regular School Board Meeting, 6 p.m.	<b>21</b>	<b>22</b>  <i>1- Hour Late Arrival</i>	<b>23</b>																																																																																				
<b>24</b>	<b>25</b>	<b>26</b>	<b>27</b>	<b>28</b>	<b>29</b>  <i>1- Hour Late Arrival</i>	<b>30</b>																																																																																				





Art by students in first through eighth grade at MP3

October 2023

National Principals Month  
Disability History and Awareness Month  
National Bullying Prevention Month

Sunday	Monday	Tuesday	Wednesday	Thursday	Friday	Saturday																																																																																				
1	2	3	4 Regular School Board Meeting, 6 p.m.	5	6 1- Hour Late Arrival	7																																																																																				
8	9	10	11	12	13 1- Hour Late Arrival	14																																																																																				
15	16	17 IRE: Picture Day	18 Regular School Board Meeting, 6 p.m.	19	20 No School Staff Workday	21																																																																																				
22	23 MP3: Picture Day (Retakes)	24	25	26	27 1- Hour Late Arrival	28																																																																																				
29	30	31			<div>September</div> <table><tr><td>S</td><td>M</td><td>T</td><td>W</td><td>T</td><td>F</td><td>S</td></tr><tr><td></td><td></td><td></td><td></td><td>1</td><td>2</td><td></td></tr><tr><td>3</td><td>4</td><td>5</td><td>6</td><td>7</td><td>8</td><td>9</td></tr><tr><td>10</td><td>11</td><td>12</td><td>13</td><td>14</td><td>15</td><td>16</td></tr><tr><td>17</td><td>18</td><td>19</td><td>20</td><td>21</td><td>22</td><td>23</td></tr><tr><td>24</td><td>25</td><td>26</td><td>27</td><td>28</td><td>29</td><td>30</td></tr></table>	S	M	T	W	T	F	S					1	2		3	4	5	6	7	8	9	10	11	12	13	14	15	16	17	18	19	20	21	22	23	24	25	26	27	28	29	30	<div>November</div> <table><tr><td>S</td><td>M</td><td>T</td><td>W</td><td>T</td><td>F</td><td>S</td></tr><tr><td></td><td></td><td></td><td>1</td><td>2</td><td>3</td><td>4</td></tr><tr><td>5</td><td>6</td><td>7</td><td>8</td><td>9</td><td>10</td><td>11</td></tr><tr><td>12</td><td>13</td><td>14</td><td>15</td><td>16</td><td>17</td><td>18</td></tr><tr><td>19</td><td>20</td><td>21</td><td>22</td><td>23</td><td>24</td><td>25</td></tr><tr><td>26</td><td>27</td><td>28</td><td>29</td><td>30</td><td></td><td></td></tr></table>	S	M	T	W	T	F	S				1	2	3	4	5	6	7	8	9	10	11	12	13	14	15	16	17	18	19	20	21	22	23	24	25	26	27	28	29	30		
S	M	T	W	T	F	S																																																																																				
				1	2																																																																																					
3	4	5	6	7	8	9																																																																																				
10	11	12	13	14	15	16																																																																																				
17	18	19	20	21	22	23																																																																																				
24	25	26	27	28	29	30																																																																																				
S	M	T	W	T	F	S																																																																																				
			1	2	3	4																																																																																				
5	6	7	8	9	10	11																																																																																				
12	13	14	15	16	17	18																																																																																				
19	20	21	22	23	24	25																																																																																				
26	27	28	29	30																																																																																						





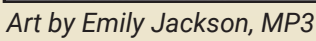
Art by Knox Goodin, Irene Reither Elementary

November 2023

Native American Indian/Alaska Native  
Heritage Month

Sunday	Monday	Tuesday	Wednesday	Thursday	Friday	Saturday																																																																																											
<div>October</div> <table><tr><td>S</td><td>M</td><td>T</td><td>W</td><td>T</td><td>F</td><td>S</td></tr><tr><td>1</td><td>2</td><td>3</td><td>4</td><td>5</td><td>6</td><td>7</td></tr><tr><td>8</td><td>9</td><td>10</td><td>11</td><td>12</td><td>13</td><td>14</td></tr><tr><td>15</td><td>16</td><td>17</td><td>18</td><td>19</td><td>20</td><td>21</td></tr><tr><td>22</td><td>23</td><td>24</td><td>25</td><td>26</td><td>27</td><td>28</td></tr><tr><td>29</td><td>30</td><td>31</td><td></td><td></td><td></td><td></td></tr></table>	S	M	T	W	T	F	S	1	2	3	4	5	6	7	8	9	10	11	12	13	14	15	16	17	18	19	20	21	22	23	24	25	26	27	28	29	30	31					<div>December</div> <table><tr><td>S</td><td>M</td><td>T</td><td>W</td><td>T</td><td>F</td><td>S</td></tr><tr><td></td><td></td><td></td><td></td><td></td><td>1</td><td>2</td></tr><tr><td>3</td><td>4</td><td>5</td><td>6</td><td>7</td><td>8</td><td>9</td></tr><tr><td>10</td><td>11</td><td>12</td><td>13</td><td>14</td><td>15</td><td>16</td></tr><tr><td>17</td><td>18</td><td>19</td><td>20</td><td>21</td><td>22</td><td>23</td></tr><tr><td>24</td><td>25</td><td>26</td><td>27</td><td>28</td><td>29</td><td>30</td></tr><tr><td>31</td><td></td><td></td><td></td><td></td><td></td><td></td></tr></table>	S	M	T	W	T	F	S						1	2	3	4	5	6	7	8	9	10	11	12	13	14	15	16	17	18	19	20	21	22	23	24	25	26	27	28	29	30	31								<b>1</b>  MMS: Picture Day (Retakes)  Regular School Board Meeting, 6 p.m.	<b>2</b>	<b>3</b>  <i>1- Hour Late Arrival</i>	<b>4</b>
S	M	T	W	T	F	S																																																																																											
1	2	3	4	5	6	7																																																																																											
8	9	10	11	12	13	14																																																																																											
15	16	17	18	19	20	21																																																																																											
22	23	24	25	26	27	28																																																																																											
29	30	31																																																																																															
S	M	T	W	T	F	S																																																																																											
					1	2																																																																																											
3	4	5	6	7	8	9																																																																																											
10	11	12	13	14	15	16																																																																																											
17	18	19	20	21	22	23																																																																																											
24	25	26	27	28	29	30																																																																																											
31																																																																																																	
<b>5</b>	<b>6</b>	<b>7</b>  Election Day Remember to Vote	<b>8</b>	<b>9</b>	<b>10</b>  No School Veterans Day Observed	<b>11</b>  Veterans Day																																																																																											
<b>12</b>	<b>13</b>	<b>14</b>	<b>15</b>	<b>16</b>	<b>17</b>  <i>1- Hour Late Arrival</i>	<b>18</b>																																																																																											
<b>19</b>	<b>20</b>	<b>21</b>	<b>22</b> Early Dismissal IRE 1:15 p.m. MMS 12:20 p.m. MHS 12:10 p.m. <i>No on campus classes for MP3</i>	<b>23</b>  No School Thanksgiving	<b>24</b>  No School Thanksgiving	<b>25</b>																																																																																											
<b>26</b>	<b>27</b>  IRE: Picture Day (Retakes)	<b>28</b>	<b>29</b>  Regular School Board Meeting, 6 p.m.	<b>30</b>																																																																																													





December 2023

Sunday	Monday	Tuesday	Wednesday	Thursday	Friday	Saturday																																																																																				
<div>November</div> <table><tr><td>S</td><td>M</td><td>T</td><td>W</td><td>T</td><td>F</td><td>S</td></tr><tr><td></td><td></td><td></td><td>1</td><td>2</td><td>3</td><td>4</td></tr><tr><td>5</td><td>6</td><td>7</td><td>8</td><td>9</td><td>10</td><td>11</td></tr><tr><td>12</td><td>13</td><td>14</td><td>15</td><td>16</td><td>17</td><td>18</td></tr><tr><td>19</td><td>20</td><td>21</td><td>22</td><td>23</td><td>24</td><td>25</td></tr><tr><td>26</td><td>27</td><td>28</td><td>29</td><td>30</td><td></td><td></td></tr></table>	S	M	T	W	T	F	S				1	2	3	4	5	6	7	8	9	10	11	12	13	14	15	16	17	18	19	20	21	22	23	24	25	26	27	28	29	30			<div>January</div> <table><tr><td>S</td><td>M</td><td>T</td><td>W</td><td>T</td><td>F</td><td>S</td></tr><tr><td></td><td>1</td><td>2</td><td>3</td><td>4</td><td>5</td><td>6</td></tr><tr><td>7</td><td>8</td><td>9</td><td>10</td><td>11</td><td>12</td><td>13</td></tr><tr><td>14</td><td>15</td><td>16</td><td>17</td><td>18</td><td>19</td><td>20</td></tr><tr><td>21</td><td>22</td><td>23</td><td>24</td><td>25</td><td>26</td><td>27</td></tr><tr><td>28</td><td>29</td><td>30</td><td>31</td><td></td><td></td><td></td></tr></table>	S	M	T	W	T	F	S		1	2	3	4	5	6	7	8	9	10	11	12	13	14	15	16	17	18	19	20	21	22	23	24	25	26	27	28	29	30	31							1  1- Hour Late Arrival	2
S	M	T	W	T	F	S																																																																																				
			1	2	3	4																																																																																				
5	6	7	8	9	10	11																																																																																				
12	13	14	15	16	17	18																																																																																				
19	20	21	22	23	24	25																																																																																				
26	27	28	29	30																																																																																						
S	M	T	W	T	F	S																																																																																				
	1	2	3	4	5	6																																																																																				
7	8	9	10	11	12	13																																																																																				
14	15	16	17	18	19	20																																																																																				
21	22	23	24	25	26	27																																																																																				
28	29	30	31																																																																																							
3	4	5	6	7	8  1- Hour Late Arrival	9																																																																																				
10	11	12	13  Regular School Board Meeting, 6 p.m.	14	15  1- Hour Late Arrival	16																																																																																				
17	18  No School Winter Break	19  No School Winter Break	20  No School Winter Break	21  No School Winter Break	22  No School Winter Break	23																																																																																				
24	25  No School Winter Break	26  No School Winter Break	27  No School Winter Break	28  No School Winter Break	29  No School Winter Break	30																																																																																				
31																																																																																										





Art by Aubrey Tolar, Meridian Middle School

January 2024

School Board Recognition Month

Sunday	Monday	Tuesday	Wednesday	Thursday	Friday	Saturday																																																																																																		
	1  No School New Year's Holiday	2	3	4	5  1- Hour Late Arrival	6																																																																																																		
7	8	9	10  Regular School Board Meeting, 6 p.m.	11	12  1- Hour Late Arrival	13																																																																																																		
14	15  No School Martin Luther King, Jr. Day	16  Temperance and Good Citizenship Day	17	18	19  1- Hour Late Arrival	20																																																																																																		
21	22	23	24  Regular School Board Meeting, 6 p.m.	25	26  No School Semester Break	27																																																																																																		
28	29	30	31		<div>December</div> <table><tr><td>S</td><td>M</td><td>T</td><td>W</td><td>T</td><td>F</td><td>S</td></tr><tr><td></td><td></td><td></td><td></td><td></td><td>1</td><td>2</td></tr><tr><td>3</td><td>4</td><td>5</td><td>6</td><td>7</td><td>8</td><td>9</td></tr><tr><td>10</td><td>11</td><td>12</td><td>13</td><td>14</td><td>15</td><td>16</td></tr><tr><td>17</td><td>18</td><td>19</td><td>20</td><td>21</td><td>22</td><td>23</td></tr><tr><td>24</td><td>25</td><td>26</td><td>27</td><td>28</td><td>29</td><td>30</td></tr><tr><td>31</td><td></td><td></td><td></td><td></td><td></td><td></td></tr></table>	S	M	T	W	T	F	S						1	2	3	4	5	6	7	8	9	10	11	12	13	14	15	16	17	18	19	20	21	22	23	24	25	26	27	28	29	30	31							<div>February</div> <table><tr><td>S</td><td>M</td><td>T</td><td>W</td><td>T</td><td>F</td><td>S</td></tr><tr><td></td><td></td><td></td><td></td><td>1</td><td>2</td><td>3</td></tr><tr><td>4</td><td>5</td><td>6</td><td>7</td><td>8</td><td>9</td><td>10</td></tr><tr><td>11</td><td>12</td><td>13</td><td>14</td><td>15</td><td>16</td><td>17</td></tr><tr><td>18</td><td>19</td><td>20</td><td>21</td><td>22</td><td>23</td><td>24</td></tr><tr><td>25</td><td>26</td><td>27</td><td>28</td><td>29</td><td></td><td></td></tr><tr><td></td><td></td><td></td><td></td><td></td><td></td><td></td></tr></table>	S	M	T	W	T	F	S					1	2	3	4	5	6	7	8	9	10	11	12	13	14	15	16	17	18	19	20	21	22	23	24	25	26	27	28	29									
S	M	T	W	T	F	S																																																																																																		
					1	2																																																																																																		
3	4	5	6	7	8	9																																																																																																		
10	11	12	13	14	15	16																																																																																																		
17	18	19	20	21	22	23																																																																																																		
24	25	26	27	28	29	30																																																																																																		
31																																																																																																								
S	M	T	W	T	F	S																																																																																																		
				1	2	3																																																																																																		
4	5	6	7	8	9	10																																																																																																		
11	12	13	14	15	16	17																																																																																																		
18	19	20	21	22	23	24																																																																																																		
25	26	27	28	29																																																																																																				





Art by Emily Hinkleman, Meridian Middle School

February 2024

Black History Month  
Career and Technical Education Month

Sunday	Monday	Tuesday	Wednesday	Thursday	Friday	Saturday																																																																																											
<div>January</div> <div><table><tr><td>S</td><td>M</td><td>T</td><td>W</td><td>T</td><td>F</td><td>S</td></tr><tr><td></td><td>1</td><td>2</td><td>3</td><td>4</td><td>5</td><td>6</td></tr><tr><td>7</td><td>8</td><td>9</td><td>10</td><td>11</td><td>12</td><td>13</td></tr><tr><td>14</td><td>15</td><td>16</td><td>17</td><td>18</td><td>19</td><td>20</td></tr><tr><td>21</td><td>22</td><td>23</td><td>24</td><td>25</td><td>26</td><td>27</td></tr><tr><td>28</td><td>29</td><td>30</td><td>31</td><td></td><td></td><td></td></tr></table></div>	S	M	T	W	T	F	S		1	2	3	4	5	6	7	8	9	10	11	12	13	14	15	16	17	18	19	20	21	22	23	24	25	26	27	28	29	30	31				<div>March</div> <div><table><tr><td>S</td><td>M</td><td>T</td><td>W</td><td>T</td><td>F</td><td>S</td></tr><tr><td></td><td></td><td></td><td></td><td></td><td>1</td><td>2</td></tr><tr><td>3</td><td>4</td><td>5</td><td>6</td><td>7</td><td>8</td><td>9</td></tr><tr><td>10</td><td>11</td><td>12</td><td>13</td><td>14</td><td>15</td><td>16</td></tr><tr><td>17</td><td>18</td><td>19</td><td>20</td><td>21</td><td>22</td><td>23</td></tr><tr><td>24</td><td>25</td><td>26</td><td>27</td><td>28</td><td>29</td><td>30</td></tr><tr><td>31</td><td></td><td></td><td></td><td></td><td></td><td></td></tr></table></div>	S	M	T	W	T	F	S						1	2	3	4	5	6	7	8	9	10	11	12	13	14	15	16	17	18	19	20	21	22	23	24	25	26	27	28	29	30	31									1	2	3
S	M	T	W	T	F	S																																																																																											
	1	2	3	4	5	6																																																																																											
7	8	9	10	11	12	13																																																																																											
14	15	16	17	18	19	20																																																																																											
21	22	23	24	25	26	27																																																																																											
28	29	30	31																																																																																														
S	M	T	W	T	F	S																																																																																											
					1	2																																																																																											
3	4	5	6	7	8	9																																																																																											
10	11	12	13	14	15	16																																																																																											
17	18	19	20	21	22	23																																																																																											
24	25	26	27	28	29	30																																																																																											
31																																																																																																	
4	5	6 Secondary Conferences MHS dismissal 12:10 p.m. MMS dismissal 12:20 p.m.	7 Secondary Conferences MHS dismissal 12:10 p.m. MMS dismissal 12:20 p.m.  Regular School Board Meeting, 6 p.m.	8 Secondary Conferences MHS dismissal 12:10 p.m. MMS dismissal 12:20 p.m.	9  1- Hour Late Arrival	10																																																																																											
11	12	13  Elementary Conferences IRE dismissal 1:15 p.m.	14  Elementary Conferences IRE dismissal 1:15 p.m.	15  Elementary Conferences IRE dismissal 1:15 p.m.	16  No School Mid-Winter Break	17																																																																																											
18	19  No School Presidents Day	20	21  Regular School Board Meeting, 6 p.m.	22	23  1- Hour Late Arrival	24																																																																																											
25	26	27	28	29																																																																																													





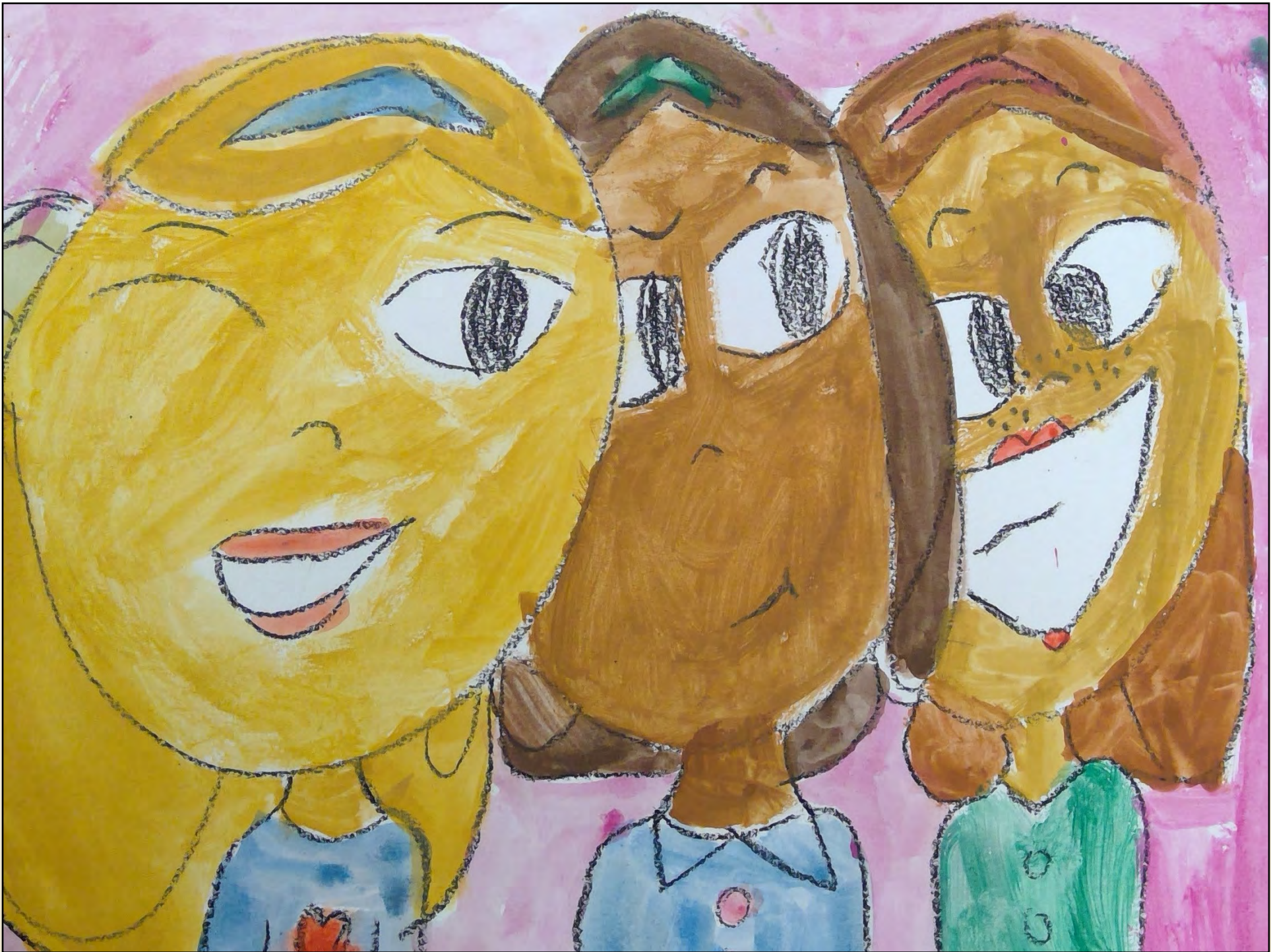
Art by Madison Brzozowski, Meridian High School

March 2024

Women’s History Month  
Music in our Schools Month

Sunday	Monday	Tuesday	Wednesday	Thursday	Friday	Saturday																																																																																				
<div>February</div> <table><tr><td>S</td><td>M</td><td>T</td><td>W</td><td>T</td><td>F</td><td>S</td></tr><tr><td></td><td></td><td></td><td></td><td>1</td><td>2</td><td>3</td></tr><tr><td>4</td><td>5</td><td>6</td><td>7</td><td>8</td><td>9</td><td>10</td></tr><tr><td>11</td><td>12</td><td>13</td><td>14</td><td>15</td><td>16</td><td>17</td></tr><tr><td>18</td><td>19</td><td>20</td><td>21</td><td>22</td><td>23</td><td>24</td></tr><tr><td>25</td><td>26</td><td>27</td><td>28</td><td>29</td><td></td><td></td></tr></table>	S	M	T	W	T	F	S					1	2	3	4	5	6	7	8	9	10	11	12	13	14	15	16	17	18	19	20	21	22	23	24	25	26	27	28	29			<div>April</div> <table><tr><td>S</td><td>M</td><td>T</td><td>W</td><td>T</td><td>F</td><td>S</td></tr><tr><td></td><td>1</td><td>2</td><td>3</td><td>4</td><td>5</td><td>6</td></tr><tr><td>7</td><td>8</td><td>9</td><td>10</td><td>11</td><td>12</td><td>13</td></tr><tr><td>14</td><td>15</td><td>16</td><td>17</td><td>18</td><td>19</td><td>20</td></tr><tr><td>21</td><td>22</td><td>23</td><td>24</td><td>25</td><td>26</td><td>27</td></tr><tr><td>28</td><td>29</td><td>30</td><td></td><td></td><td></td><td></td></tr></table>	S	M	T	W	T	F	S		1	2	3	4	5	6	7	8	9	10	11	12	13	14	15	16	17	18	19	20	21	22	23	24	25	26	27	28	29	30								1 <div>1- Hour Late Arrival</div>	2
S	M	T	W	T	F	S																																																																																				
				1	2	3																																																																																				
4	5	6	7	8	9	10																																																																																				
11	12	13	14	15	16	17																																																																																				
18	19	20	21	22	23	24																																																																																				
25	26	27	28	29																																																																																						
S	M	T	W	T	F	S																																																																																				
	1	2	3	4	5	6																																																																																				
7	8	9	10	11	12	13																																																																																				
14	15	16	17	18	19	20																																																																																				
21	22	23	24	25	26	27																																																																																				
28	29	30																																																																																								
3	4	5	6 <div>Regular School Board Meeting, 6 p.m.</div>	7	8 <div>No School Staff Workday</div>	9																																																																																				
10	11	12	13	14	15 <div>1- Hour Late Arrival</div>	16																																																																																				
17	18	19	20 <div>Regular School Board Meeting, 6 p.m.</div>	21	22 <div>1- Hour Late Arrival</div>	23																																																																																				
24	25	26	27	28	29	30																																																																																				
31					<div>1- Hour Late Arrival</div>																																																																																					





Art by Eleanor Lunde, MP3

April 2024

Autism Awareness Month  
School Library Month

Sunday	Monday	Tuesday	Wednesday	Thursday	Friday	Saturday																																																																													
	1  No School Spring Break	2  No School Spring Break	3  No School Spring Break	4  No School Spring Break	5  No School Spring Break	6																																																																													
7	8	9	10  Regular School Board Meeting, 6 p.m.	11	12  1- Hour Late Arrival	13																																																																													
14	15	16	17	18	19  1- Hour Late Arrival	20																																																																													
21	22	23	24  Regular School Board Meeting, 6 p.m.	25	26  1- Hour Late Arrival	27																																																																													
28	29	30			<div>March</div> <table><tr><td>S</td><td>M</td><td>T</td><td>W</td><td>T</td><td>F</td><td>S</td></tr><tr><td>3</td><td>4</td><td>5</td><td>6</td><td>7</td><td>8</td><td>9</td></tr><tr><td>10</td><td>11</td><td>12</td><td>13</td><td>14</td><td>15</td><td>16</td></tr><tr><td>17</td><td>18</td><td>19</td><td>20</td><td>21</td><td>22</td><td>23</td></tr><tr><td>24</td><td>25</td><td>26</td><td>27</td><td>28</td><td>29</td><td>30</td></tr><tr><td>31</td><td></td><td></td><td></td><td></td><td></td><td></td></tr></table>	S	M	T	W	T	F	S	3	4	5	6	7	8	9	10	11	12	13	14	15	16	17	18	19	20	21	22	23	24	25	26	27	28	29	30	31							<div>May</div> <table><tr><td>S</td><td>M</td><td>T</td><td>W</td><td>T</td><td>F</td><td>S</td></tr><tr><td>5</td><td>6</td><td>7</td><td>8</td><td>9</td><td>10</td><td>11</td></tr><tr><td>12</td><td>13</td><td>14</td><td>15</td><td>16</td><td>17</td><td>18</td></tr><tr><td>19</td><td>20</td><td>21</td><td>22</td><td>23</td><td>24</td><td>25</td></tr><tr><td>26</td><td>27</td><td>28</td><td>29</td><td>30</td><td>31</td><td></td></tr></table>	S	M	T	W	T	F	S	5	6	7	8	9	10	11	12	13	14	15	16	17	18	19	20	21	22	23	24	25	26	27	28	29	30	31	
S	M	T	W	T	F	S																																																																													
3	4	5	6	7	8	9																																																																													
10	11	12	13	14	15	16																																																																													
17	18	19	20	21	22	23																																																																													
24	25	26	27	28	29	30																																																																													
31																																																																																			
S	M	T	W	T	F	S																																																																													
5	6	7	8	9	10	11																																																																													
12	13	14	15	16	17	18																																																																													
19	20	21	22	23	24	25																																																																													
26	27	28	29	30	31																																																																														





Art by Blayne Petty, Meridian Middle School

May 2024

Asian/Pacific American Heritage Month  
Mental Health Awareness Month

Sunday	Monday	Tuesday	Wednesday	Thursday	Friday	Saturday																																																																																											
<div>April</div> <table><tr><td>S</td><td>M</td><td>T</td><td>W</td><td>T</td><td>F</td><td>S</td></tr><tr><td></td><td>1</td><td>2</td><td>3</td><td>4</td><td>5</td><td>6</td></tr><tr><td>7</td><td>8</td><td>9</td><td>10</td><td>11</td><td>12</td><td>13</td></tr><tr><td>14</td><td>15</td><td>16</td><td>17</td><td>18</td><td>19</td><td>20</td></tr><tr><td>21</td><td>22</td><td>23</td><td>24</td><td>25</td><td>26</td><td>27</td></tr><tr><td>28</td><td>29</td><td>30</td><td></td><td></td><td></td><td></td></tr></table>	S	M	T	W	T	F	S		1	2	3	4	5	6	7	8	9	10	11	12	13	14	15	16	17	18	19	20	21	22	23	24	25	26	27	28	29	30					<div>June</div> <table><tr><td>S</td><td>M</td><td>T</td><td>W</td><td>T</td><td>F</td><td>S</td></tr><tr><td></td><td></td><td></td><td></td><td></td><td></td><td>1</td></tr><tr><td>2</td><td>3</td><td>4</td><td>5</td><td>6</td><td>7</td><td>8</td></tr><tr><td>9</td><td>10</td><td>11</td><td>12</td><td>13</td><td>14</td><td>15</td></tr><tr><td>16</td><td>17</td><td>18</td><td>19</td><td>20</td><td>21</td><td>22</td></tr><tr><td>23</td><td>24</td><td>25</td><td>26</td><td>27</td><td>28</td><td>29</td></tr><tr><td>30</td><td></td><td></td><td></td><td></td><td></td><td></td></tr></table>	S	M	T	W	T	F	S							1	2	3	4	5	6	7	8	9	10	11	12	13	14	15	16	17	18	19	20	21	22	23	24	25	26	27	28	29	30								1	2	3 <div>1- Hour Late Arrival</div>	4
S	M	T	W	T	F	S																																																																																											
	1	2	3	4	5	6																																																																																											
7	8	9	10	11	12	13																																																																																											
14	15	16	17	18	19	20																																																																																											
21	22	23	24	25	26	27																																																																																											
28	29	30																																																																																															
S	M	T	W	T	F	S																																																																																											
						1																																																																																											
2	3	4	5	6	7	8																																																																																											
9	10	11	12	13	14	15																																																																																											
16	17	18	19	20	21	22																																																																																											
23	24	25	26	27	28	29																																																																																											
30																																																																																																	
5	6	7	8 <div>Regular School Board Meeting, 6 p.m.</div>	9	10 <div>No School Staff Workday</div>	11																																																																																											
12	13	14	15	16	17 <div>1- Hour Late Arrival</div>	18																																																																																											
19	20	21	22 <div>Regular School Board Meeting, 6 p.m.</div>	23	24 <div>1- Hour Late Arrival</div>	25																																																																																											
26	27 <div>No School Memorial Day</div>	28	29	30	31 <div>1- Hour Late Arrival</div>																																																																																												





Art by Angely Del Cid, Irene Reither Elementary

June 2024

LGBTQ+ Pride Month

Sunday	Monday	Tuesday	Wednesday	Thursday	Friday	Saturday																																																																																				
<div><div>May</div><table><tr><td>S</td><td>M</td><td>T</td><td>W</td><td>T</td><td>F</td><td>S</td></tr><tr><td></td><td></td><td></td><td>1</td><td>2</td><td>3</td><td>4</td></tr><tr><td>5</td><td>6</td><td>7</td><td>8</td><td>9</td><td>10</td><td>11</td></tr><tr><td>12</td><td>13</td><td>14</td><td>15</td><td>16</td><td>17</td><td>18</td></tr><tr><td>19</td><td>20</td><td>21</td><td>22</td><td>23</td><td>24</td><td>25</td></tr><tr><td>26</td><td>27</td><td>28</td><td>29</td><td>30</td><td>31</td><td></td></tr></table></div>	S	M	T	W	T	F	S				1	2	3	4	5	6	7	8	9	10	11	12	13	14	15	16	17	18	19	20	21	22	23	24	25	26	27	28	29	30	31		<div><div>July</div><table><tr><td>S</td><td>M</td><td>T</td><td>W</td><td>T</td><td>F</td><td>S</td></tr><tr><td></td><td>1</td><td>2</td><td>3</td><td>4</td><td>5</td><td>6</td></tr><tr><td>7</td><td>8</td><td>9</td><td>10</td><td>11</td><td>12</td><td>13</td></tr><tr><td>14</td><td>15</td><td>16</td><td>17</td><td>18</td><td>19</td><td>20</td></tr><tr><td>21</td><td>22</td><td>23</td><td>24</td><td>25</td><td>26</td><td>27</td></tr><tr><td>28</td><td>29</td><td>30</td><td>31</td><td></td><td></td><td></td></tr></table></div>	S	M	T	W	T	F	S		1	2	3	4	5	6	7	8	9	10	11	12	13	14	15	16	17	18	19	20	21	22	23	24	25	26	27	28	29	30	31								1
S	M	T	W	T	F	S																																																																																				
			1	2	3	4																																																																																				
5	6	7	8	9	10	11																																																																																				
12	13	14	15	16	17	18																																																																																				
19	20	21	22	23	24	25																																																																																				
26	27	28	29	30	31																																																																																					
S	M	T	W	T	F	S																																																																																				
	1	2	3	4	5	6																																																																																				
7	8	9	10	11	12	13																																																																																				
14	15	16	17	18	19	20																																																																																				
21	22	23	24	25	26	27																																																																																				
28	29	30	31																																																																																							
2	3	4	5	6	7	8																																																																																				
			MHS Graduation* Tentative		1- Hour Late Arrival																																																																																					
9	10 MP3: Kindergarten Graduation & 8th Grade Promotion	11 IRE: Kindergarten Graduation	12 MP3: No Campus Classes Early Dismissal IRE 1:15 p.m. MMS 12:20 p.m. MHS 12:10 p.m. Last Day of School	13	14	15																																																																																				
16	17	18	19 District Office and School Offices Closed Juneteenth	20 School Offices Close for Summer	21	22																																																																																				
23	24	25	26 Regular School Board Meeting, 6 p.m.	27	28	29																																																																																				
30																																																																																										

\*The date for graduation will be finalized at the first School Board meeting in March 2024 and communicated with families.





Art by Gursharan Dhillon, Irene Reither Elementary

July 2024

Sunday	Monday	Tuesday	Wednesday	Thursday	Friday	Saturday																																																																																											
	1	2	3	4 Independence Day District Office Closed	5	6																																																																																											
7	8	9	10	11	12	13																																																																																											
14	15	16	17	18	19	20																																																																																											
21	22	23	24	25	26	27																																																																																											
28	29	30	31		<div>June<div><table><tr><td>S</td><td>M</td><td>T</td><td>W</td><td>T</td><td>F</td><td>S</td></tr><tr><td></td><td></td><td></td><td></td><td></td><td></td><td>1</td></tr><tr><td>2</td><td>3</td><td>4</td><td>5</td><td>6</td><td>7</td><td>8</td></tr><tr><td>9</td><td>10</td><td>11</td><td>12</td><td>13</td><td>14</td><td>15</td></tr><tr><td>16</td><td>17</td><td>18</td><td>19</td><td>20</td><td>21</td><td>22</td></tr><tr><td>23</td><td>24</td><td>25</td><td>26</td><td>27</td><td>28</td><td>29</td></tr><tr><td>30</td><td></td><td></td><td></td><td></td><td></td><td></td></tr></table></div></div>	S	M	T	W	T	F	S							1	2	3	4	5	6	7	8	9	10	11	12	13	14	15	16	17	18	19	20	21	22	23	24	25	26	27	28	29	30							<div>August<div><table><tr><td>S</td><td>M</td><td>T</td><td>W</td><td>T</td><td>F</td><td>S</td></tr><tr><td></td><td></td><td></td><td></td><td>1</td><td>2</td><td>3</td></tr><tr><td>4</td><td>5</td><td>6</td><td>7</td><td>8</td><td>9</td><td>10</td></tr><tr><td>11</td><td>12</td><td>13</td><td>14</td><td>15</td><td>16</td><td>17</td></tr><tr><td>18</td><td>19</td><td>20</td><td>21</td><td>22</td><td>23</td><td>24</td></tr><tr><td>25</td><td>26</td><td>27</td><td>28</td><td>29</td><td>30</td><td>31</td></tr></table></div></div>	S	M	T	W	T	F	S					1	2	3	4	5	6	7	8	9	10	11	12	13	14	15	16	17	18	19	20	21	22	23	24	25	26	27	28	29	30	31
S	M	T	W	T	F	S																																																																																											
						1																																																																																											
2	3	4	5	6	7	8																																																																																											
9	10	11	12	13	14	15																																																																																											
16	17	18	19	20	21	22																																																																																											
23	24	25	26	27	28	29																																																																																											
30																																																																																																	
S	M	T	W	T	F	S																																																																																											
				1	2	3																																																																																											
4	5	6	7	8	9	10																																																																																											
11	12	13	14	15	16	17																																																																																											
18	19	20	21	22	23	24																																																																																											
25	26	27	28	29	30	31																																																																																											





Meridian School District No. 505  
214 W. Laurel Road  
Bellingham, WA 98226

*Art by Annya Edin, MHS*

learning  *thrives here*

**Meridian School District**

214 W. Laurel Road  
Bellingham, WA 98226  
360-398-7111

**Superintendent**

Dr. James Everett

**School Board**

Sara Bernardy  
Steve Corwin  
Marty Gray  
Jarrod Karuza  
Craig Mitchell

**Connect with us!**

@meridianschooldistrict505



[www.meridian.wednet.edu](http://www.meridian.wednet.edu)



*The Meridian School District does not discriminate in any programs or activities on the basis of sex, race, creed, religion, color, national origin, age, veteran or military status, sexual orientation, gender expression or identity, disability, or the use of a trained dog guide or service animal and provides equal access to the Boy Scouts and other designated youth groups. The following employee has been designated to handle questions and complaints of alleged discrimination: Title IX, ADA, and Compliance Coordinator (RCW 28A.640/28A.642) Kurt Harvill, Assistant Superintendent, [kharvill@meridian.wednet.edu](mailto:kharvill@meridian.wednet.edu). Section 504 questions and complaints can be directed to Aaron Jacoby, Director of Special Education, [ajacoby@meridian.wednet.edu](mailto:ajacoby@meridian.wednet.edu). The mailing address for each director is: 214 W. Laurel Rd., Bellingham WA 98226. 360-398-7111.*

